

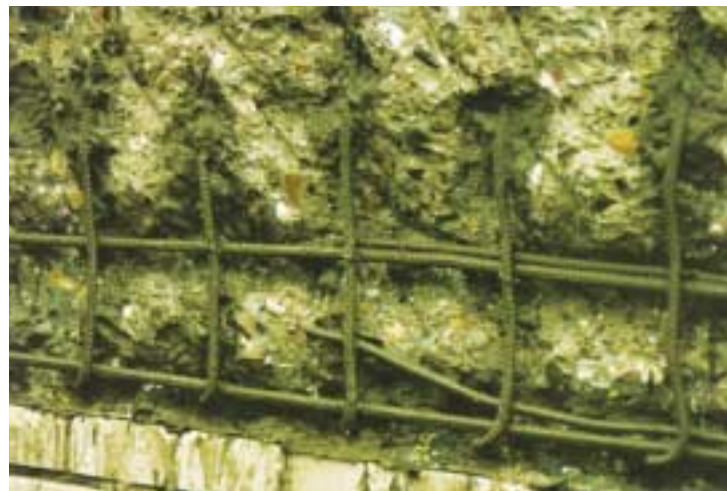
M1 O/O2 PAGEL®- CORROSION-PROTECTION ON CEMENT BASIS

PROPERTIES

- high-quality corrosion protection on mineral basis and constituent of our **PCC/SPCC-Concrete Maintenance System**
- contains a polymer powder, is **mixed only with water** and forms a tough-hard coating
- increases not just the corrosion protection of steel reinforcement but also improves at the same time the **adhesion strength** of the concrete and mortar substrate
- can be processed **without problems**, even on vertical surfaces and overhead, is impermeable to water and resistant to saponification
- can also be applied to **moist substrates**
- is frost and dew-salt resistant, capable of vapour diffusion and prevents the penetration of CO₂
- has been **checked** as corrosion protection in accordance with **ZTV-SIB 90 (TL/TP-PCC/SPCC)** and can be used both in the **PCC-** and **SPCC-area**. M1 O/O2 is subject to constant **internal monitoring** – externally it is monitored by BAM, Berlin (test certificate no. BAM 2.1/22343/2)
- as **corrosion protection** it can be applied **three times** (SPCC) and it can also be applied **twice** in the PCC-area.
- is subject to our own **constant controlling** in accordance with the recognized standards and guidelines. The production is certified in accordance with **ISO 9001**.

FIELDS OF APPLICATION

- **mineral corrosion protection** for concrete steel and other metallic surfaces
- can be used on **moist** substrates
- **adhesion layer for concrete and mortar substrates**



M10/O2 PAGEL®-CORROSION-PROTECTION

TECHNICAL DATA

TYPE	M10/O2		
Basic	cement		
Form	powder		
Components	1		
Colour	grey		
Mixing ratio	powder : water	5 : 1 (15 kg/3 l)	
Coating	2-3 times		
Consumption (coating)	g/m ²	approx. 1 600	
Coating thickness (total)	µm	approx. 1 200	
Adhesion strength (concrete substrate)	N/mm ²	> 2	
Processing time	10 °C	min.	60
	20 °C	min.	45
	30 °C	min.	30
Processing temperature	°C	+5 to +40	
Humidity of air	%	< 95	

Supplied in:	15-kg-bucket / 25-kg-bag
Storage:	dry
Shelf-life:	6 months in closed containers, storage temperature min. 1 °C
Hazard Class:	no dangerous substance follow safety data sheet

All the specified test data were determined at 20 °C.

PROCESSING

SURFACE: Metallic substrates must have their rust removed down to bare metal (Sa 2 1/2 in accordance with DIN 55928, Part 4) by blasting.

Cement-bound substrates must be solid and load-supporting, have a fine-feel and be free of cement glue, loose and brittle parts as well as substances having a separation effect such as oil, fat, abraded rubber, coating residues or such like. The substrate may be moist. Substrate pre-treatment is necessary e.g. sand, ball, high-pressure-water blasting, milling or abrading. Following pre-treatment the abrasion resistance of the substrate must be at least 1.5 N/mm² (mean).

MIXING: Thoroughly mix M10/O2 with approx. 20 % water (approx. 3 l/15 kg bucket) in a mechanical agitator at a maximum of 300 revs/min. (slow-running drilling machine with inserted stirring paddle) until the mixture is homogeneous and free of lumps (approx. 5 minutes). Allow the mixture "to ripen" for a short period.

PROCESSING: Apply M10/O2 with a brush (armoured) or with a roller (concrete substrate) without leaving gaps to the prepared substrate. The second and third coating follows after approx. 4 – 48 hours as soon as the first coating is brush-solid.

After hardening of the second coating (approx. 24 hours) M10/O2 can be coated with for example M10 PAGEL-READY-TO-USE-MORTAR. For spray coatings (e.g. SP20 PAGEL-SPRAY-MORTAR) three coatings are necessary.

CLEANING: The equipment and tools are to be cleaned carefully with water after every process.

The data of the prospectus, technical advice about applications and other recommendations are based on extensive research work and experience. However, they are not binding, also in respect of the rights of third parties, and they do not release the customer from the obligation to check for himself the products and processes in respect of their suitability for the application in question. The specified data were determined at 20°C. These figures are average values and analyses. Differences are possible at the time of delivery.

Our Customer Services are at all times willing to help you and we should be glad of any interest you might show.

Previous product information is invalidated by the appearance of this edition.



PAGEL®

SPEZIAL-BETON GMBH & CO. KG

WOLFSBANKRING 9 · D-45355 ESSEN

TEL. +49(0)201-68504-0 · FAX +49(0)201-68504-31

Internet: www.pagel-grout.com · eMail: info@pagel-grout.com